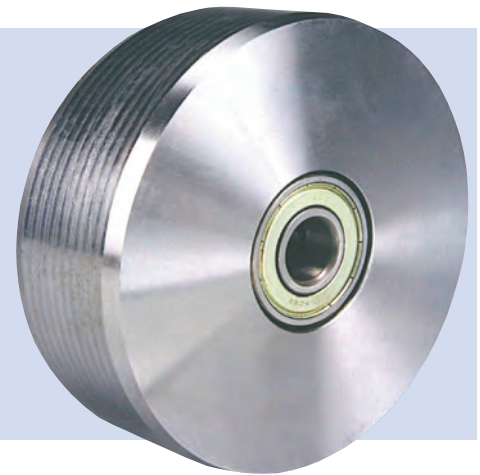


ST SERIES - Steel Wheels

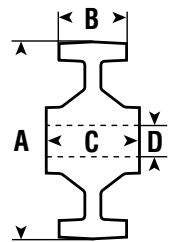
Wheel Type: Steel
 Standard Finish: Clear Resin Shellac Painted
 Temperature Range: Most extremes (dependent on bearing choice) - contact factory for details

- Wheel Characteristics:**
- Steel wheels offer exceptional strength, shock resistance and long service life
 - Machined from solid mild steel blanks for the toughest applications



A = Wheel Diameter B = Tread Width C = Hub Length D = Bore

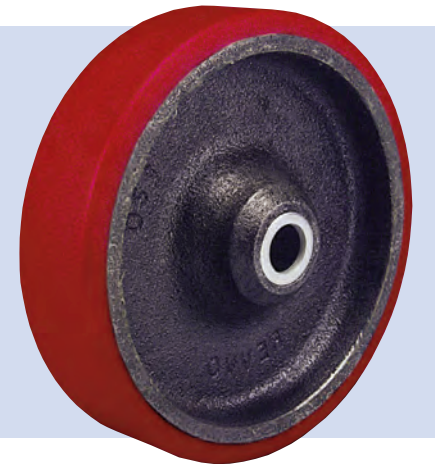
ST SERIES								
A	B	C	D	Load Capacity	Bearing Type	Wheel Weight	Wheel Part #	Used in Caster Series
2"	9/16"	11/16"	12mm	300	Plain	.44	050 ST0L	2SL
6"	2"	1-7/8"	20mm	2500	Precision Ball	13.90	150 ST2H	H
6"	2-3/16"	2-1/8"	1-1/4"	4400	Taper Roller	18.70	150 STTP	P
6"	2-1/2"	2-7/16"	1-1/4"	5000	Taper Roller	16.56	150 STTT	T
8"	2-3/16"	2-1/8"	1-1/4"	5500	Taper Roller	41.00	200 STTP	P
8"	3-3/8"	3-3/16"	50mm	11175	Taper Roller	41.00	200 ST3T	T



PU SERIES - Polyurethane-on-Cast-Iron Wheels

Wheel Type: Polyurethane Tire on Cast-Iron Center
 Standard Finish: Red Tire on Silver Painted Center
 Temperature Range: Consult factory
 Durometer: 90° - 95° Shore A

- Wheel Characteristics:**
- Offers many of the beneficial characteristics of Revvothane PT Series Polyurethane tires (see page 46) as an economical alternative
 - Available with sealed precision bearings



A = Wheel Diameter B = Tread Width C = Hub Length D = Bore

PU SERIES								
A	B	C	D	Load Capacity	Bearing Type	Wheel Weight	Wheel Part #	Used in Caster Series
4"	1-1/2"	1-5/8"	1/2"	590	Roller	2.86	100 PU14	4, E
4"	2"	2-3/8"	3/4"	680	Roller	2.97	100 PU1G	G, H, K
5"	1-1/2"	1-5/8"	1/2"	700	Roller	2.92	125 PU14	4, E
5"	2"	2-3/8"	3/4"	1000	Roller	3.16	125 PU1G	G, H, K
6"	2"	2-3/8"	3/4"	1150	Roller	5.94	150 PU1G	5, G, H, K
8"	2"	2-3/8"	3/4"	1450	Roller	9.17	200 PU1G	5, G, H, K

