



## PT SERIES - Polyurethane-on-Cast-Iron Wheels

Wheel Type: "Revvothane" (Vulkollan®) Polyurethane Tire on Cast-Iron Center  
 Standard Finish: Tan Tire on Clear Resin Shellac Painted Center  
 Temperature Range: -22°F to 176°F  
 Durometer: 92° - 97° Shore A

### Wheel Characteristics:

- Revvothane wheels have a high tear strength, exceptional abrasion resistance, and up to ten-times the service life of comparable rubber-tired wheels operating under similar conditions and loads
- Provides up to three-times the load capacities of comparable rubber wheels, enabling the use of a smaller diameter wheel if required
- Excellent recovery from long periods of heavy static loading
- Maintenance-free precision bearings; ease of movement
- Cast-iron center withstands shock loading and side impact
- Narrow tread for easy push/pull
- Offers low rolling resistance with floor-saving characteristics
- Ideal for towing speeds up to 10 mph
- Repels floor debris (e.g. metal shavings)
- Resistant to a wide range of oils, greases and chemicals
- Recommended for towing, automotive manufacturing, aviation ground support, ergonomic push/pull applications

### Wet Conditions Capability:

- A special grade of polyurethane tires is designed for use in wet conditions. Please contact the factory for details.

Polyurethane wheels are sensitive to hydrolyzing agents such as hot water, steam, and hot moist air, strong acids and alcohol.

**Features**  
 narrow footprint  
 wheels for ergonomic  
 push-pull results.

6" Wheels - only 1-1/4" face contact  
 8" - 12" wheels - only 1-1/2" face contact



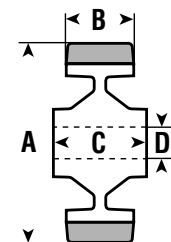
Shown with precision ball bearing



Shown with plain bearing



A = Wheel Diameter    B = Tread Width    C = Hub Length    D = Bore



PT SERIES								
A	B	C	D	Load Capacity	Bearing Type	Wheel Weight	Wheel Part #	Used in Caster Series
2"	9/16"	11/16"	12mm	175	Plain	.44	050 PT0L	2SL
2"	3/4"	15/16"	8mm	175	Plain	.28	050 PT02	2
2-1/2"	1"	1 1/4"	10mm	300	Plain	.49	063 PT03	3
2-1/2"	1"	1 1/4"	3/8"	300	Roller	.75	063 PTR3	
3"	3/4"	15/16"	10mm	200	Plain	.50	075 PT02	2
3"	1"	1-1/4"	10mm	440	Plain	.70	075 PT03	3
3"	1"	1-3/4"	12mm*	385	Plain	.83	075 PT04	4
3"	1"	1-3/4"	12mm*	385	Roller	1.24	075 PT14	4
3"	1"	1-3/4"	20mm	385	Precision Ball	1.36	075 PT24	4
4"	3/4"	15/16"	10mm	330	Plain	1.00	100 PT02	2
4"	3/4"	1-1/4"	10mm	330	Plain	1.05	100 PT03	3
4"	1-1/8"	1-3/4"	12mm*	550	Plain	1.16	100 PT04	4, E
4"	1-1/8"	1-3/4"	12mm*	550	Roller	1.94	100 PT14	4, E
4"	1-1/2"	2-3/8"	20mm**	750	Roller	3.92	100 PT1H	G, H, K
4"	1-1/2"	2-1/4"	20mm**	750	Precision Ball	3.81	100 PT2H	G, H, K
5"	1-1/4"	1-3/4"	12mm*	770	Plain	2.55	125 PT04	4, E
5"	1-1/4"	1-3/4"	12mm*	770	Roller	2.83	125 PT14	4, E
5"	1-1/2"	2-3/8"	20mm**	935	Roller	3.81	125 PT1H	G, H, K
5"	1-1/2"	2-1/4"	20mm**	935	Precision Ball	3.81	125 PT2H	G, H, K
6"	1-1/2"	2-3/8"	20mm**	1600	Roller	5.94	150 PT15	5, G, H, K, P
6"	1-1/2"	2-1/4"	20mm**	1600	Precision Ball	5.68	150 PT2H	5, G, H, K, P
6"	1-1/2"	2-3/8"	25mm	1600	Roller	6.49	150 PT1A	
8"	1-3/4"	2-3/8"	20mm**	2420	Roller	9.17	200 PT15	5, G, H, K, P
8"	1-3/4"	2-1/4"	20mm**	2420	Precision Ball	9.00	200 PT2H	5, G, H, K, P
8"	1-3/4"	2-3/8"	25mm	2420	Roller	9.17	200 PT1A	
8"	1-3/4"	2-3/8"	3/4"	2420	Taper Roller	9.46	200 PTTA	
8"	2-1/4"	2-1/4"	20mm	2860	Precision Ball	9.00	200 PT2A	
8"	3"	3-1/2"	3/4"	3950	Taper Roller	17.47	200 PTTT	T, X
8"	3"	3-1/2"	1"	3950	Taper Roller	15.55	200 PTTC	2ST
8"	3"	3-1/8"	25mm	3950	Precision Ball	17.47	200 PT2P	P
8"	3"	3"	30mm	3950	Precision Ball	17.47	200 PT2Q	
10"	1-3/4"	2-3/8"	25mm	2640	Roller	13.35	250 PT1H	H, P
10"	1-3/4"	2-1/4"	25mm	2640	Precision Ball	13.28	250 PT2H	H, P
10"	2-1/4"		20mm	3300	Precision Ball		250 PT2C	H, P
10"	3"	3-1/2"	3/4"	5500	Taper Roller	24.86	250 PTTT	T, X
10"	3"	3-1/2"	1"	5500	Taper Roller	23.97	250 PTTC	2ST
10"	3"	3-1/8"	25mm	5500	Precision Ball	24.86	250 PT2P	P
10"	3"	3"	30mm	5500	Precision Ball	24.00	250 PT2Q	
12"	1-3/4"	2-3/8"	25mm	3080	Roller	18.26	300 PT1H	H, P
12"	1-3/4"	2-1/4"	25mm	3080	Precision Ball	18.70	300 PT2H	H, P
12"	2-1/4"		20mm	3960	Precision Ball		300 PT2C	H, P
12"	3"	3-1/2"	3/4"	6000	Taper Roller	29.70	300 PTTT	T, X
12"	3"	3-1/2"	1"	6000	Taper Roller	33.52	300 PTTB	2ST
12"	3"	3-1/8"	25mm	6000	Precision Ball	26.40	300 PT2P	P
12"	3"	3"	30mm	6000	Precision Ball	33.55	300 PT2Q	
16"	4"	4-1/2"	1"	9900	Taper Roller	75.75	400 PTTT	T
16"	4"	4-1/8"	35mm	9900	Precision Ball	75.75	400 PT2A	
16"	5"	4-3/4"	50mm	14740	Taper Roller	111.00	400 PT32	Y, Z

\*Available in 3/8" bore. Please consult factory.

\*\*Available in 1/2" bore. Please consult factory.