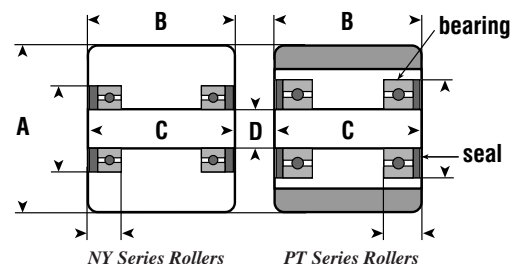
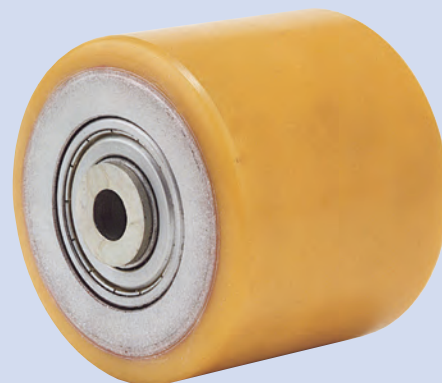
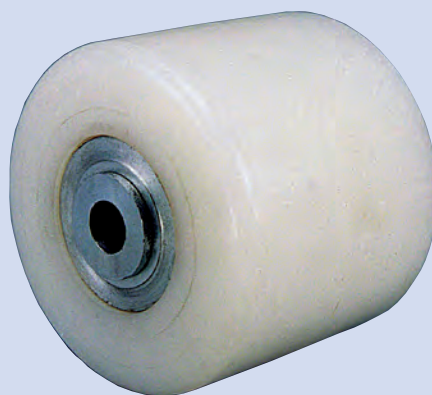


NY & PT SERIES Rollers - Nylon & Polyurethane

NY Roller Type: Nylon Roller on Cast-Iron Center
Standard Finish: White
Temperature Range: -4°F to 176°F (41°F to 104°F preferred)
Durometer: 80° - 85° Shore D

PT Roller Type: "Revvothane" (Vulkollan®) Polyurethane on Cast-Iron Center
Standard Finish: Clear Resin Shellac Painted
Temperature Range: -22°F to 176°F
Durometer: 92° - 97° Shore A

- Roller Characteristics:**
- Pallet truck type rollers sharing the same characteristics with NY Series (see page 39) and PT Series (see page 46) wheels.
 - Available with or without precision ball bearings



A = Wheel Diameter B = Tread Width C = Hub Length D = Bore

NY & PT SERIES							
A	B	C	D	Load Capacity	Bearing Type	Roller Type	Wheel Part #
3-3/8"	2-15/16"	2-7/8"	1-5/8"	900	Less Bearings & Seals	Nylon	085 NY8M
3-3/8"	2-15/16"	2-7/8"	20mm*	900	Precision Ball	Nylon	085 NY2M
3-3/8"	3-15/16"	3-15/16"	1-5/8"	900	Less Bearings & Seals	Nylon	085 NY8B
3-3/8"	3-15/16"	3-15/16"	20mm*	900	Precision Ball	Nylon	085 NY2B
3-3/8"	2-15/16"	2-15/16"	1-7/8"	1320	Less Bearings & Seals	Revvothane	085 PT8M
3-3/8"	2-15/16"	2-15/16"	20mm*	1320	Precision Ball	Revvothane	085 PT2M
3-3/8"	3-15/16"	3-15/16"	1-7/8"	1760	Less Bearings & Seals	Revvothane	085 PT8C
3-3/8"	3-15/16"	3-15/16"	20mm*	1760	Precision Ball	Revvothane	085 PT2C

*Available in 1/2" bore. Please consult factory.