

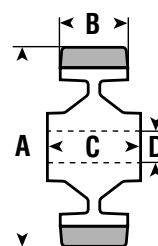
## GR SERIES - Green Rubber Wheels

- Wheel Type: Abrasion-resistant Rubber Tire on Nylon or Aluminum Center
- Standard Finish: Green Tire on Black Nylon or Self-color Aluminum Center
- Temperature Range: -40°F to 158°F (INTM: 212°F)
- Durometer: 60° ±3 Shore N; 70° ±3 Shore A
- Wheel Characteristics:**
- Thick, abrasion-resistant tires on Nylon or Aluminum centers
  - Available with roller bearings or maintenance-free ball bearings (lubricated for wheel lifetime)
  - Ideal for towing speeds up to 8 mph
  - Repels floor debris (e.g. metal shavings)
  - Non-marking, quiet running
  - Reduces noise level compared to polyurethane wheels
  - Higher load capacities than standard rubber wheels



A = Wheel Diameter    B = Tread Width    C = Hub Length    D = Bore

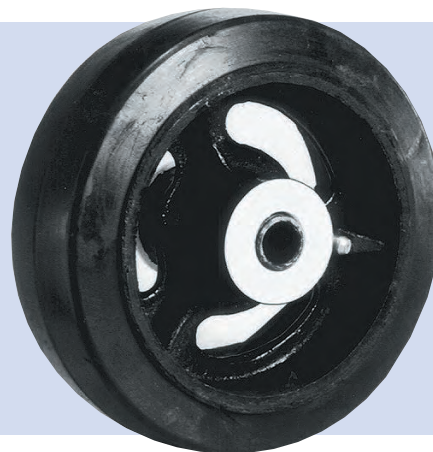
GR SERIES								
A	B	C	D	Load Capacity	Bearing Type	Wheel Weight	Wheel Part #	Used in Caster Series
4"	1-1/4"	1-3/4"	12mm*	400	Roller	1.32	100 GR1E	E, 4
5"	1-1/4"	1-3/4"	12mm*	440	Roller	1.76	125 GR1E	E, 4
5"	1-1/2"	2-3/8"	20mm	440	Precision Ball	1.50	125 GR2H	G, H, K
6"	1-1/2"	2-3/8"	20mm**	660	Precision Ball	2.20	150 GR2H	G, H, K
6-1/4"	1-1/2"	2-3/8"	20mm	660	Precision Ball	2.40	160 GR2H	G, H, K
8"	1-1/2"	2-3/8"	20mm**	880	Precision Ball	3.00	200 GR2H	G, H, K
10"	1-1/2"	2-3/8"	20mm**	1100	Precision Ball	4.75	250 GR2H	G, H, K



\*Available in 3/8" bore. Please consult factory.  
 \*\*Available in 1/2" bore. Please consult factory.

## RT SERIES - Rubber-on-Cast-Iron Wheels

- Wheel Type: Rubber Mold-on Tires with Spoked Cast-Iron Centers
- Temperature Range: (Please consult factory)
- Durometer: 70° - 80° Shore A
- Wheel Characteristics:**
- An economical alternative to RU Series wheels (see page 43) with lower load capacities



A = Wheel Diameter    B = Tread Width    C = Hub Length    D = Bore

RT SERIES								
A	B	C	D	Load Capacity	Bearing Type	Wheel Weight	Wheel Part #	Used in Caster Series
4"	2"	2-3/8"	3/4"	200	Roller	3.11	100 RT1G	G, H, K
5"	2"	2-3/8"	3/4"	350	Roller	3.35	125 RT1G	G, H, K
6"	2"	2-3/8"	3/4"	500	Roller	3.74	150 RT1G	5, G, H, K
8"	2"	2-3/8"	3/4"	550	Roller	4.87	200 RT1G	5, G, H, K

