

CP SERIES - Cushion Rubber Wheels

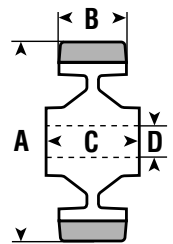
Wheel Type: Cushion Rubber Tire on Polypropylene Center
 Standard Finish: Computer Gray
 Temperature Range: 14°F to 104°F
 Durometer: 80° - 85° Shore A

- Wheel Characteristics:**
- Soft, resilient cushion rubber tires on molded-plastic centers
 - Attractive appearance
 - Rustproof
 - Quiet running
 - Helps protect floors



A = Wheel Diameter B = Tread Width C = Hub Length D = Bore

CP SERIES									
A	B	C	D	Load Capacity	Bearing Type	Wheel Weight	Wheel Part #	Used in Caster Series	
4"	1"	1-3/4"	12mm*	150	Plain	.56	100 CP04	4, E	
4"	1"	1-3/4"	12mm*	150	Roller	.60	100 CP14	4, E	
5"	1-1/8"	1-3/4"	12mm*	195	Plain	.92	125 CP04	4, E	
5"	1-1/8"	1-3/4"	12mm*	195	Roller	.96	125 CP14	4, E	

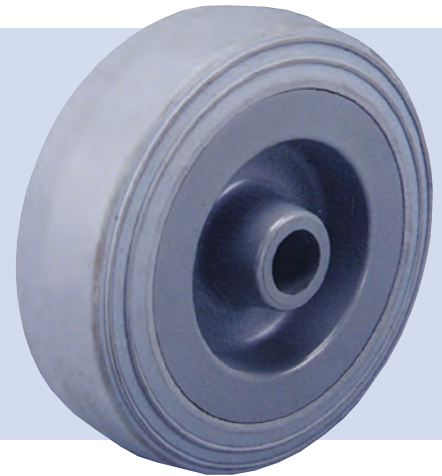


*Available in 3/8" bore. Please consult factory.

RL SERIES - Cushion Rubber Wheels

Wheel Type: "Revvolite" Cushion Rubber Tire on Polypropylene Center
 Standard Finish: Gray
 Temperature Range: 14°F to 104°F
 Durometer: 83° - 87° Shore A

- Wheel Characteristics:**
- Soft, resilient cushion rubber tires on molded-plastic centers
 - Attractive appearance
 - Rustproof
 - Quiet running
 - Hygienic
 - Helps protect floors



A = Wheel Diameter B = Tread Width C = Hub Length D = Bore

RL SERIES									
A	B	C	D	Load Capacity	Bearing Type	Wheel Weight	Wheel Part #	Used in Caster Series	
1-5/8"	11/16"	3/4"	5/16"	30	Plain	.09	040 RL01	1	
2"	11/16"	3/4"	5/16"	30	Plain	.10	050 RL01	1	
2"	3/4"	13/16"	5/16"	75	Plain	.12	050 RL02	2	
2-1/2"	3/4"	3/4"	5/16"	35	Plain	.15	063 RL01	1	
2-1/2"	1"	1-3/16"	10mm	65	Plain	.22	063 RL03	3	
3"	3/4"	15/16"	3/8"	80	Plain	.23	075 RL02	2	
3"	1"	1-3/16"	10mm	85	Plain	.28	075 RL03	3	
4"	3/4"	15/16"	3/8"	90	Plain	.32	100 RL02	2	
4"	1"	1-3/16"	3/8"	110	Plain	.43	100 RL03	3	
5"	1-1/8"	1-3/16"	12mm	120	Plain	.50	125 RL03	3	

