

# CI SERIES - Cast-Iron Wheels

Wheel Type: Cast Iron  
 Standard Finish: Clear Resin Shellac Painted  
 Temperature Range: Most extremes (dependent on bearing choice) - contact factory for details

- Wheel Characteristics:**
- Cast-iron wheels combine strength and shock resistance with long service life and economy
  - Crowned tread to provide low tractive resistance; ideal where ease of movement is required
  - Metal withstands temperature extremes that would destroy plastic or rubber-tire wheels
  - Available with sealed precision bearings
  - Designed as a basic, economical wheel for use where rough service conditions prevail

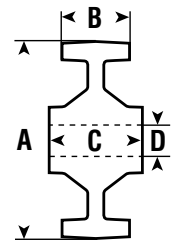
Although painted, cast-iron wheels will eventually rust (like all ferrous metals). In addition, cast-iron wheels can cause floor wear and noise.



A = Wheel Diameter    B = Tread Width    C = Hub Length    D = Bore

## CI SERIES

A	B	C	D	Load Capacity	Bearing Type	Wheel Weight	Wheel Part #	Used in Caster Series
2"	13/16"	15/16"	8mm	175	Plain	.44	050 CI02	2
2-1/2"	1"	2-3/8"	10mm	285	Plain	.62	063 CI03	3
3"	1"	1-1/4"	10mm	300	Plain	.84	075 CI03	3
3"	1-3/8"	1-3/4"	12mm*	415	Plain	1.32	075 CI04	4
3"	1-3/8"	1-3/4"	12mm*	415	Roller	1.68	075 CI14	4
4"	1-1/2"	1-3/4"	12mm*	550	Plain	1.93	100 CI04	4, E
4"	1-1/2"	1-3/4"	12mm*	550	Roller	2.26	100 CI14	4, E
4"	1-3/4"	2-3/8"	20mm**	700	Roller	3.71	100 CI1H	G, H, K
4"	1-3/4"	1-15/16"	20mm**	700	Precision Ball	3.72	100 CI2H	G, H, K
5"	1-1/2"	1-3/4"	12mm*	650	Plain	2.72	125 CI04	4, E
5"	1-1/2"	1-3/4"	12mm*	650	Roller	3.14	125 CI14	4, E
5"	1-3/4"	2-3/8"	20mm**	1385	Roller	2.77	125 CI1H	G, H, K
5"	1-3/4"	1-15/16"	20mm**	1385	Precision Ball	4.49	125 CI2H	G, H, K
6"	1-3/4"	2-3/8"	20mm**	2000	Roller	5.76	150 CI15	5, G, H, K, P
6"	1-3/4"	1-15/16"	20mm**	2000	Precision Ball	5.59	150 CI2H	5, G, H, K, P
6"	1-3/4"	2-3/8"	25mm	2000	Roller	7.64	150 CI1A	
8"	1-3/4"	2-3/8"	20mm**	2525	Roller	9.10	200 CI15	5, H, G, K, P
8"	1-3/4"	2-3/8"	25mm	2525	Roller	10.85	200 CI1A	
8"	1-3/4"	1-15/16"	20mm**	2525	Precision Ball	9.10	200 CI2H	G, H, K, P
8"	2-1/2"	2-3/4"	1-1/2"	5000	Plain	17.60	200 CIPT	T
10"	2-1/8"	2-3/8"	25mm	2725	Roller	15.40	250 CI1H	H, P
10"	2-1/8"	2-1/4"	25mm	2725	Precision Ball	15.84	250 CI2H	H, P
10"	2-1/2"	2-3/4"	1-1/2"	5000	Plain	22.00	250 CIPT	T



\*Available in 3/8" bore. Please consult factory.  
 \*\*Available in 1/2" bore. Please consult factory.