



**NEW!**

## S Series Stainless Steel Casters for Harsh Environments



Designed for medical and other institutional facilities as well as food, pharmaceutical, and chemical processing plants, Revvo's new stainless steel casters are ideally suited to conditions where moisture, cleaning agents, steam, and caustic or corrosive chemicals are present.

Available with Performa Protect antimicrobial wheels to control bacteria, molds, mildew, fungi, and odors.

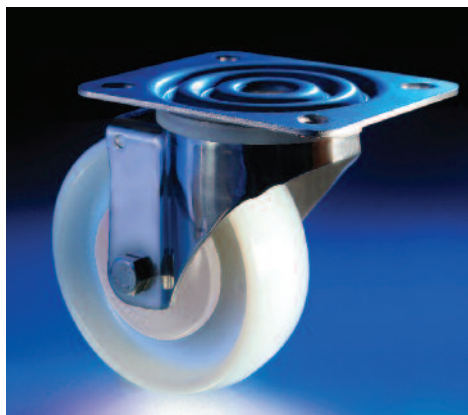


1-888-883-3596 • [www.RevvoCaster.com](http://www.RevvoCaster.com)

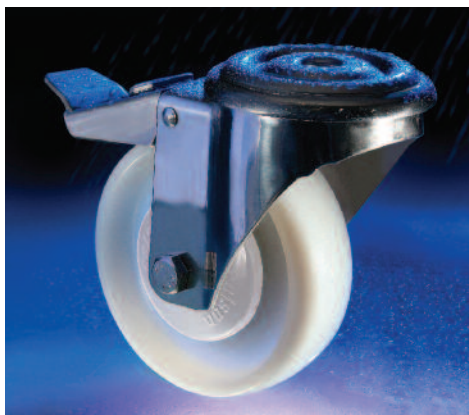


# S Series Stainless Steel Medium-Duty Casters

- Constructed of grade 304 stainless steel for use in harsh, corrosive environments
- Styles include top plate swivel or rigid, and bolt-hole swivel
- Available in three wheel diameters: 3-9/64", 4", and 5"
- Load capacities from 220 lbs. to 660 lbs.
- Features stainless steel ball journal bearings

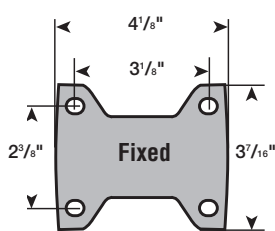
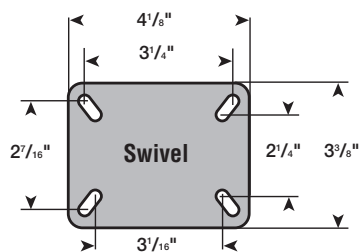


Swivel models are fitted with a double ball bearing head, and top plate models are sealed.



An optional foot-operated pedal applies a brake to both the wheel and swivel head. It is available with top plate or bolt-hole swivel casters and nylon or Performa Protect wheels.

## Top Plate Dimensions



Top plates have fixing holes to suit 5/16" diameter bolts.

## Performa Protect Antimicrobial Wheels

- Suppresses growth of microbes and helps control bacteria, molds, fungi, and odors
- Features non-marking gray soft-tread tires
- Lasts the functional life of the product
- Reduces wheel decay and deterioration
- Resists color fading and discoloration to retain attractive appearance
- Quiet operation
- Prevents vibration and shock to delicate instrumentation and equipment



S SERIES							Top Plate		Bolt Hole (M12)
Wheel Diameter	Overall Height	Swivel Radius	Tread Width	Load Capacity	Bearing	Wheel Type	Swivel Part #	Fixed Part #	Swivel Part #
3-9/64"	4-1/4"	1-9/16"	1-1/4"	220	Precision Ball	Nylon	TSS 080 NY25	TFS 080 NY25	BSS 080 NY25
3-9/64"	4-1/4"	1-9/16"	1-1/4"	220	Precision Ball	Peforma	TSS 080 PP25	TFS 080 PP25	BSS 080 PP25
4"	5"	1-9/16"	1-1/4"	330	Precision Ball	Nylon	TSS 100 NY25	TFS 100 NY25	BSS 100 NY25
4"	5"	1-9/16"	1-1/4"	330	Precision Ball	Peforma	TSS 100 PP25	TFS 100 PP25	BSS 100 PP25
5"	6-1/8"	1-3/4"	1-3/8"	660	Precision Ball	Nylon	TSS 125 NY25	TFS 125 NY25	BSS 125 NY25
5"	6-1/8"	1-3/4"	1-9/16"	660	Precision Ball	Peforma	TSS 125 PP25	TFS 125 PP25	BSS 125 PP25

To order swivel and wheel brake, add suffix L to Swivel Part #

Bolt hole size is 12mm



**The Revvo Caster Company, Inc.**  
 2420 North America Drive • West Seneca, NY 14224  
 In Canada:  
 P.O. Box 236 • Fort Erie, ON L2A 5M9

Phone: 716-675-9609 • Fax: 716-677-2363  
 TOLL-FREE: 1-888-883-3596  
 E-Mail: info@revvocaster.com  
 www.RevvoCaster.com



A Colson Associates Company